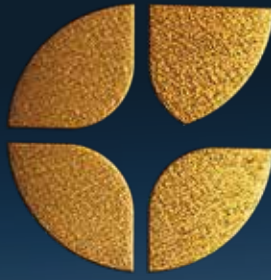




AQUAGOLD





*A legacy
of innovation
and excellence*

Four industry pioneers with **10,000+ hectares** of sustainable shrimp farms came together to create Aquagold, a company built on **experience, technology, and full integration**.

With a **state-of-the-art packing plant** and a **\$60 million investment**, we guarantee unmatched quality, traceability, and efficiency.

STRAIGHT *from the* SOURCE



Reliable and consistent supply - Owning our production allows us to guarantee year-round availability, ensuring stability and quality for our global partners.



State-of-the-art new packing facility
Ensuring maximum efficiency and quality control



Complete vertical integration
From hatchery to export, we control every step



7,000 metric tons monthly capacity
Reliable supply for global markets

OUR CERTIFICATIONS



Proud member of
Happy Shrimp Council

Great
Place
To
Work®

Certified
AGO 2025-AGO 2026
ECUADOR

Quality at Every Stage



10,000 hectares of sustainable shrimp farming: BAP & ASC certified for environmental responsibility.



Complete chain control for maximum traceability: From larva to export, every step is monitored.



5 in-house laboratories: Ensuring the highest standards in food safety and quality.

- **Physical-Chemical Lab:** Ensures optimal product composition.
- **Organoleptic Lab:** Evaluates texture, color, and taste.
- **Metrology Lab:** Precise weight and measurement control.
- **Microbiology Lab:** Ensures food safety and compliance.
- **Defrosting Lab:** Quality assurance for product consistency after thawing.
- **Product Development Lab:** Innovation in new formats and tailored solutions.



Real-time monitoring centers: Track farm and plant conditions 24/7 for optimal efficiency.





Our Brands



Vita Gulf



Golden Shrimp



Jin Kuang's

*100%
Natural*

*No
antibiotics*

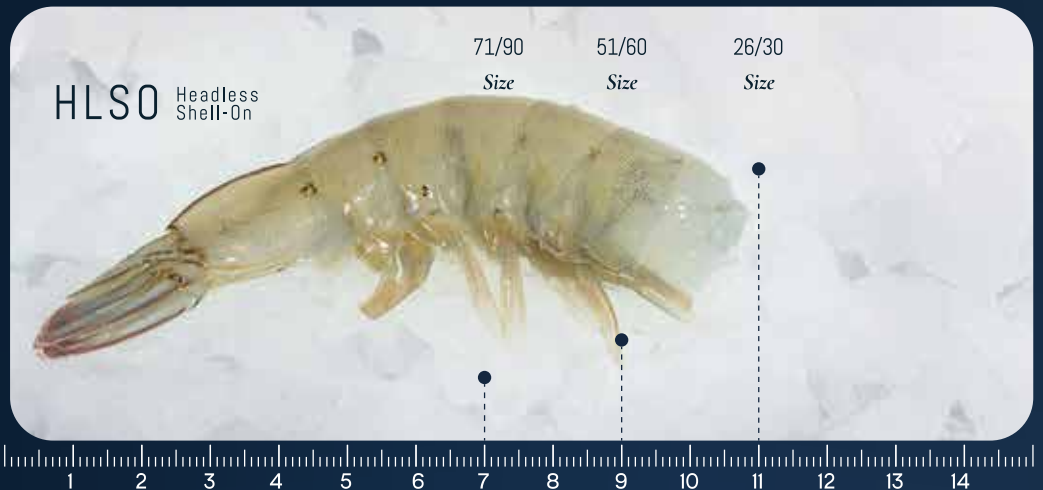


Jin Pai



Aqua Maris

Our Products



Freezing Methods

Block or Semi-IQF



Thawing time is greater compared to IQF and Brine.

Brine



Ideal for reprocessing and HORECA market.

IQF



Individual glaze % varies according to client requests.



HOSO

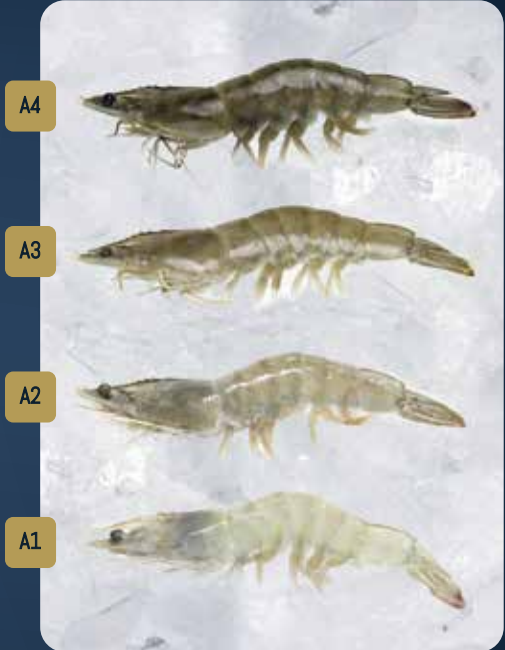


HLSO



Added Value

Colour



HOSO Sizes – Grams

Grams	10-20	20-30	30-40	40-50	50-60	60-70	70-80	80-100	100-120	120-150	150-200
7										85%	15%
8										50%	
9										90%	
10								10%		65%	
11							12%	88%		35%	
12							57%	43%			
13							95%	5%			
14						46%	54%				
15						94%	6%				
16					35%	65%					
17					72%	28%					
18				5%	95%						
19				34%	66%						
20				60%	40%						
21				84%	16%						
22			6%	94%							
23			25%	75%							
24			43%	57%							
25			60%	40%							
26			75%	25%							
27			90%	10%							
28		3%	97%								
29		15%	85%								
30		27%	73%								
31		37%	63%								
32		47%	53%								
33		57%	43%								
34		66%	44%								
35		74%	26%								
36		82%	18%								
37		90%	10%								
38		97%	3%								
39	4%	96%									
40	10%	90%									

While our allocation model is mathematically correct, variations in natural conditions, specifically uniformity, may result in slight discrepancies in allocation per gram in practical application.

Tide Calendar

○ New moon

● Full moon

☾ Third quarter

☽ First quarter

■ Waterlogging

■ Maximum waterlogging

2025

JULY

S	M	T	W	T	F	S
		1	☾ 2	3	4	5
6	7	8	9	○ 10	11	12
13	14	15	16	☾ 17	18	19
20	21	22	23	● 24	25	26
27	28	29	30	31		

AUGUST

S	M	T	W	T	F	S
						☾ 1 2
3	4	5	6	7	8	○ 9
10	11	12	13	14	15	☾ 16
17	18	19	20	21	22	● 23
24	25	26	27	28	29	30
						☾ 31

SEPTEMBER

S	M	T	W	T	F	S
		1	2	3	4	5 6
○ 7	8	9	10	11	12	13
☾ 14	15	16	17	18	19	20
● 21	22	23	24	25	26	27
28	☾ 29	30				

OCTOBER

S	M	T	W	T	F	S
				1	2	3 4
5	○ 6	7	8	9	10	11
12	☾ 13	14	15	16	17	18
19	20	● 21	22	23	24	25
26	27	28	☾ 29	30	31	

NOVEMBER

S	M	T	W	T	F	S
						1
2	3	4	○ 5	6	7	8
9	10	11	☾ 12	13	14	15
16	17	18	19	● 20	21	22
23	24	25	26	27	☾ 28	29
30						

DICEMBER

S	M	T	W	T	F	S
		1	2	3	○ 4	5 6
7	8	9	10	☾ 11	12	13
14	15	16	17	18	● 19	20
21	22	23	24	25	26	☾ 27
28	29	30	31			

2026

JANUARY

S	M	T	W	T	F	S
						1 2 ○ 3
4	5	6	7	8	9	☾ 10
11	12	13	14	15	16	17
● 18	19	20	21	22	23	24
☾ 25	26	27	28	29	30	31

FEBRUARY

S	M	T	W	T	F	S
○ 1	2	3	4	5	6	7
8	☾ 9	10	11	12	13	14
15	16	● 17	18	19	20	21
22	23	☾ 24	25	26	27	28

MARCH

S	M	T	W	T	F	S
			○ 1	2	3	4
5	6	7	8	☾ 9	10	11
12	13	14	15	16	● 17	18
19	20	21	22	☾ 23	24	25
26	27	28	29	30		

APRIL

S	M	T	W	T	F	S
1	2	○ 3	4	5	6	7
8	9	10	☾ 11	12	13	14
15	16	17	● 18	19	20	21
22	23	☾ 24	25	26	27	28
29	30	31				

MAY

S	M	T	W	T	F	S
						○ 1 2
3	4	5	6	7	8	☾ 9
10	11	12	13	14	15	● 16
17	18	19	20	21	22	☾ 23
24	25	26	27	28	29	30
						○ 31

JUNE

S	M	T	W	T	F	S
	1	2	3	4	5	6
7	☾ 8	9	10	11	12	13
● 14	15	16	17	18	19	20
☾ 21	22	23	24	25	26	27
28	29	30				

Tide periods estimated based on 2026 lunar phases. Minor variations (+/- 1 day) may occur due to latitude, lunar timing, and local oceanic conditions.

*Premium
Ecuadorian
Shrimp, Trusted
Worldwide*



Dive
into our
world

